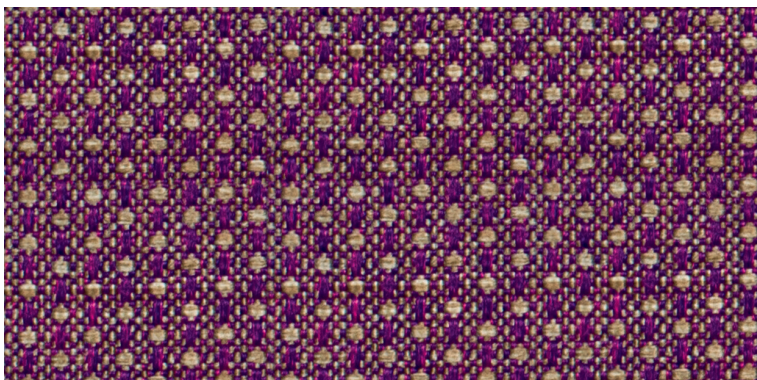


# TESSUTO MAMBO

Mambo fabric - Tissu Mambo - Stoff Mambo - Tejido Mambo - Mambo ткань



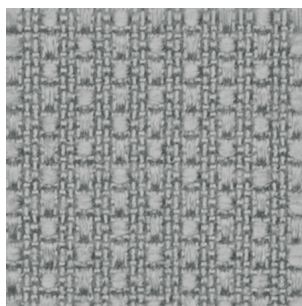
**TMA07** Viola oro - Violet gold - Violet or - Violett gold - Violeta oro - Фиолетово-золотой



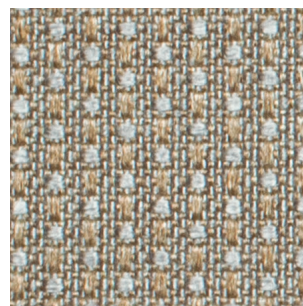
**TMA01** Bianco - White - Blanc - Weiß - Blanco - Белый



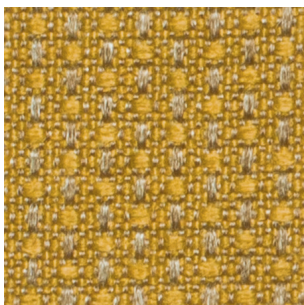
**TMA02** Ghiaccio - Ice - Glace - Eis - Hielo - Лед



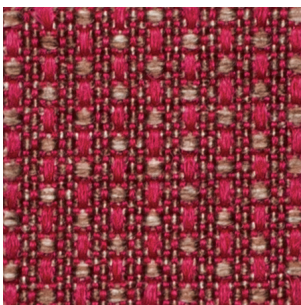
**TMA03** Grigio chiaro - Light grey - Gris clair - Hell grau - Gris claro - Светло-серый



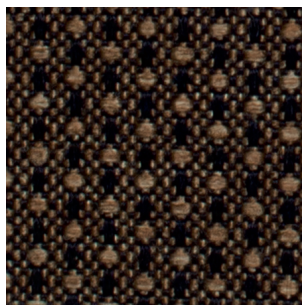
**TMA04** Tortora - Dove grey - Tourterelle - Taubengrau - Gris ceniciento - Серо-бежевый



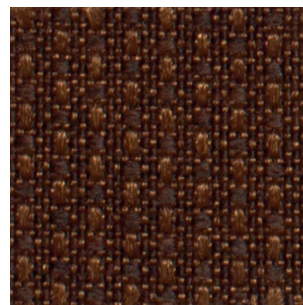
**TMA05** Senape - Mustard - Moutarde - Senffarbe - Mostaza - Горчица



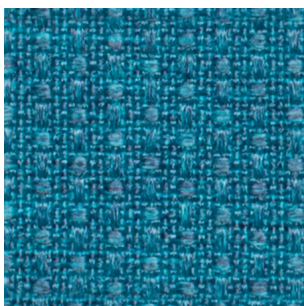
**TMA06** Corallo oro - Coral gold - Corail or - Koralle gold - Coral oro - Кораллово-золотой



**TMA11** Nero oro - Black gold - Noir or - Schwarz gold - Negro oro - Черное золото



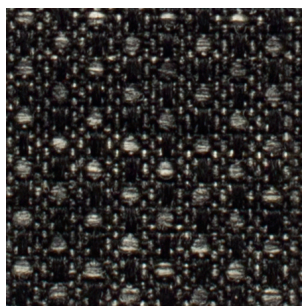
**TMA10** Testa di moro - Dark brown - Marron foncé - Dunkelbraun - Marrón oscuro - Темно-коричневый



**TMA08** Turchese - Turquoise - Turquoise - Türkis - Turquesa - Бирюза



**TMA09** Blu di Prussia - Prussian blue - Bleu de Prusse - Preußisch blau - Azul de Prusia - Прусский синий



**TMA12** Antracite - Anthracite - Anthracite - Anthrazit - Antracita - Антрацит

# TESSUTO MAMBO

Mambo fabric - Tissu Mambo - Stoff Mambo - Tejido Mambo - Mambo ткань

## COMPOSIZIONE - COMPOSITION - COMPOSITION - ZUSAMMENSETZUNG - COMPOSICIÓN - СОСТАВ

100% polipropilene - polypropylene - polypropylène - Polypropylen - polipropileno - полипропилен

## SIMBOLOGIA - LIST OF SYMBOLS - SYMBOLOGIE - SYMBOLIK - SIMBOLOGÍA УСЛОВНЫЕ ОБОЗНАЧЕНИЯ



## RITIRO STIMATO - SHRINKING ABOUT - RÉTRÉCISSEMENT ESTIMÉ GESCHÄTZTE SCHRUMPFUNG - ENCOGIMIENTO ESTIMADO - УСАДКА

0%

## ALTEZZA - WIDTH

140 cm

## SOLIDITÀ DEL COLORE ALLA LUCE - COLOUR FASTNESS TO LIGHT

xeno ISO 105 B12

4/5

## SOLIDITÀ DEL COLORE ALLO SFREGAMENTO - COLOUR FASTNESS TO RUBBING

crockmeter ISO 105 X12

secco-dry 5

umido-wet 4/5

## RESISTENZA AL PILLING - PILLING RESISTANCE

ISO 12945-2

4/5

## RESISTENZA ALLO SCORRIMENTO FILI - SEAM SLIPPAGE

ISO 13936-2

1,50 mm

## RESISTENZA ALL'ABRASIONE - ABRASION RESISTANCE

martindale ISO 12947-2

≥ 33.000 cicli-rubs



## IDROPELENTE - WATERPROOF

La collezione è impreziosita da un trattamento idrorepellente che ne garantisce la facile pulizia.  
Collection is enhanced by waterproof treatment in order to allow easy cleaning.



## ANTISTATICO - ANTISTATIC



## ANALLERGICO/ANTIBATTERICO - HYPOALLERGENIC/ANTIBACTERIAL



## IRRESTRINGIBILE - NO-SHRINK



## IGNIFUGO - FIRE RETARDANT

IT UNI 9175 Class 1IM

EU EN 1021-1:2006

EN 1021-2:2006

FR NF D 60-013:2006 (art. AM 18)

U.S.A CALIFORNIA TB 117:2013

NAUTICO FTP code 307(88):10 annex 1 part 8